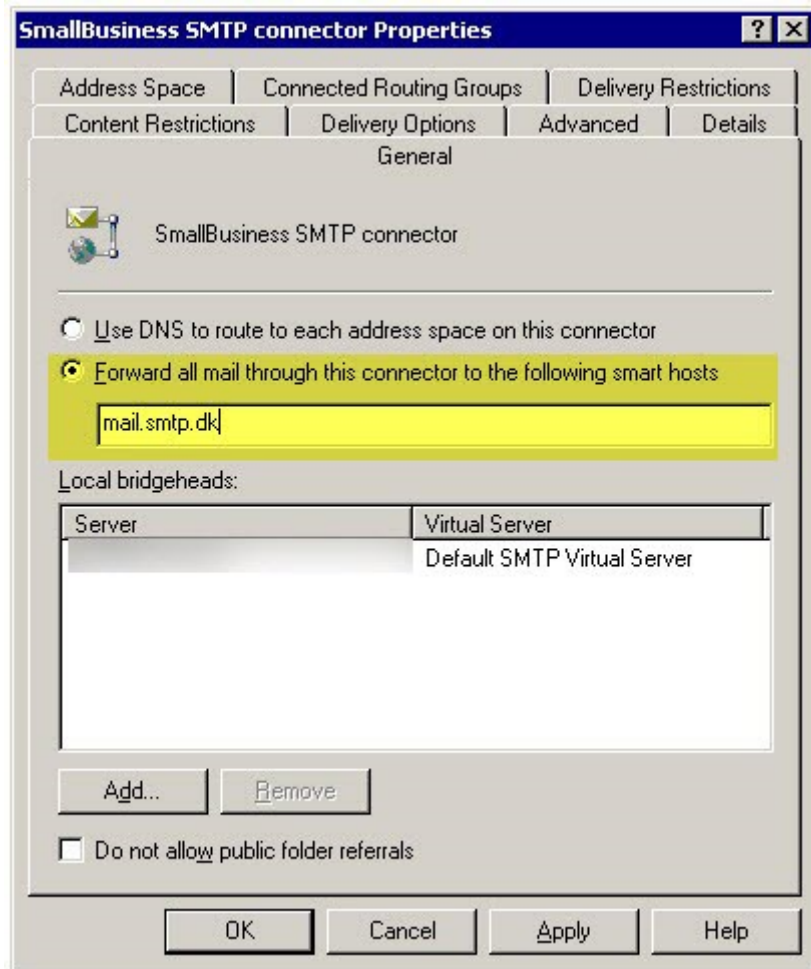




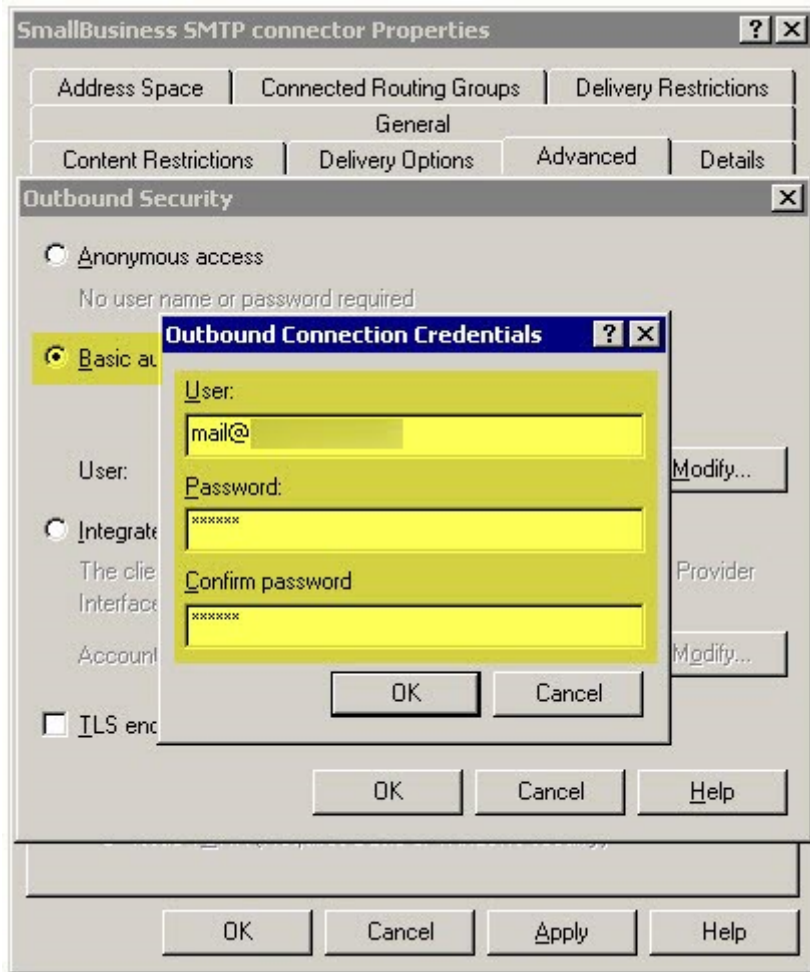
SMTP Connector
1.



Open SMTP connector properties

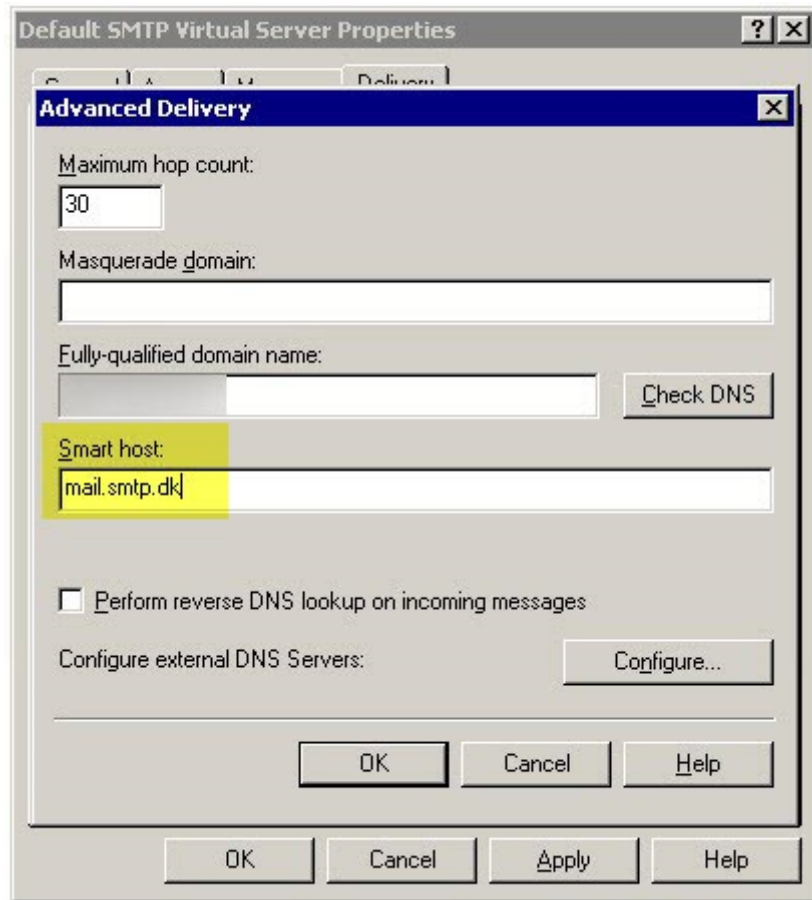
Type: mail.smtp.dk as smart host

2.



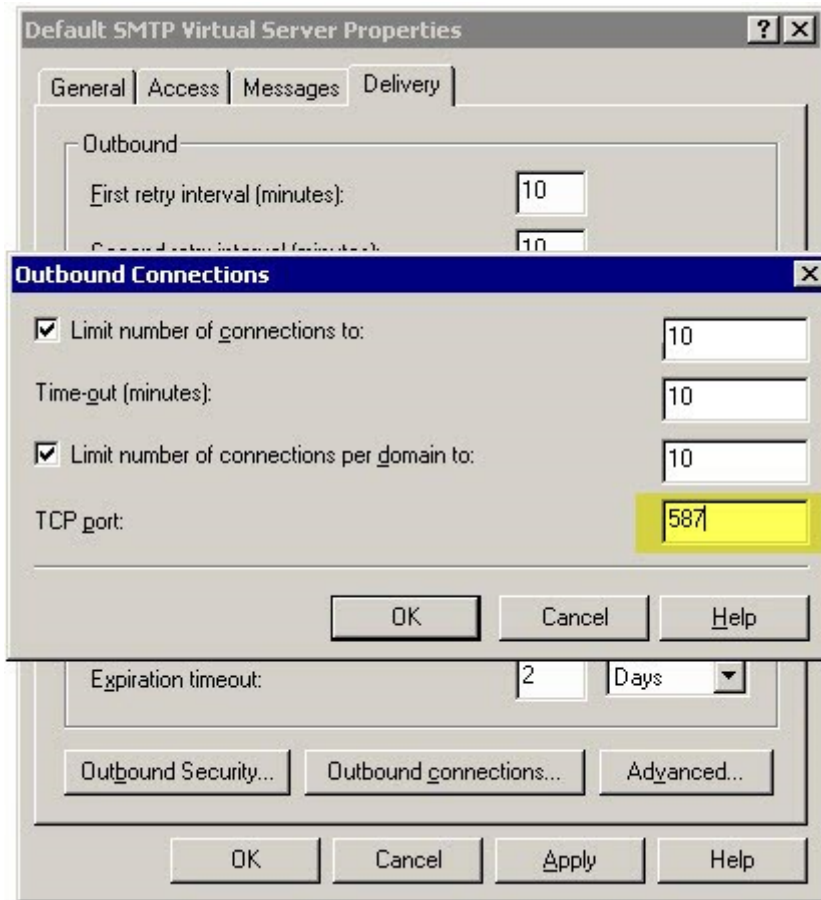
Click Advanced and insert SMTP login credentials received in set-up email

3.



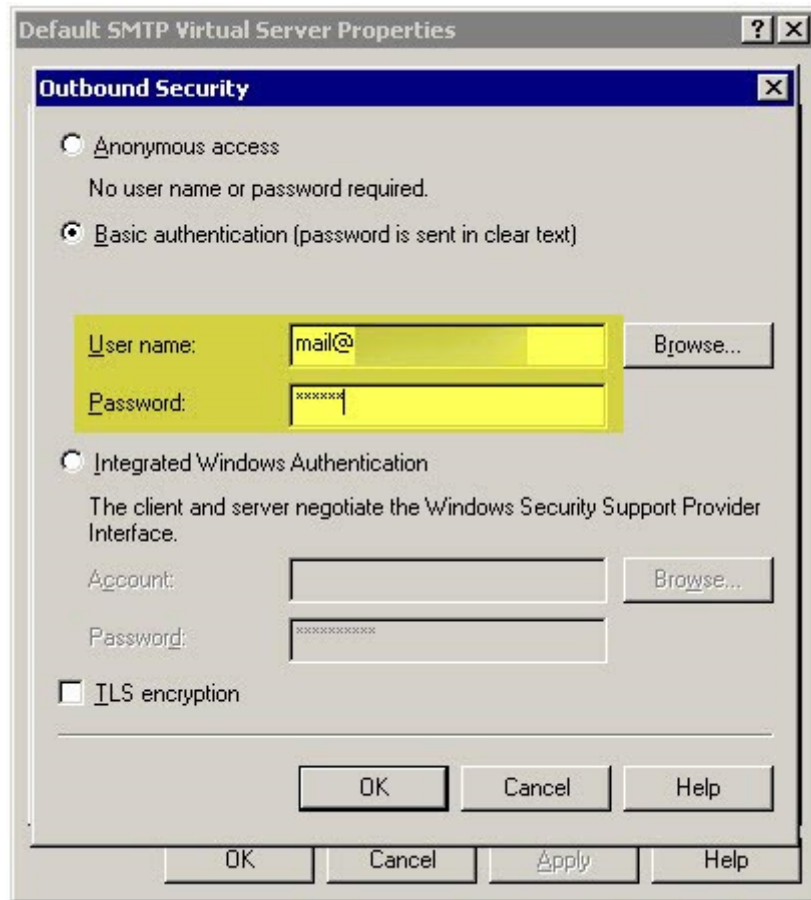
Insert mail.smtp.dk as smart host

4.



Set TCP port to: 587

5.



Insert SMTP login in Outbound Security

- Then OK, and test